

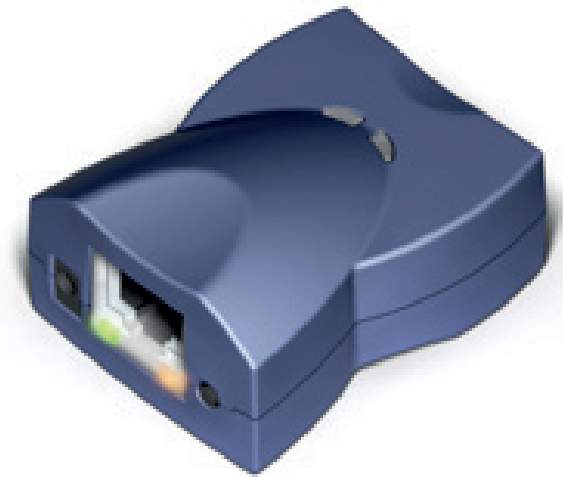
DS203

RS232 - TCP/IP CONVERTER

The DS203 is a serial device server that can be used to quickly network-enable virtually any serial device or system. Tested and supplied as an option for use with our Nortech CRC controllers.

SERIAL-OVER-IP:

- Full and half-duplex serial port modes.
- Server, client, and server/client network ("routing") modes.
- Numerous other options for connections, serial port, etc.
- 8KB data buffers (one in each direction).
- Configuration stored in the EEPROM.
- Detailed status indication via LEDs.
- Setup through the serial port or network (UDP, Telnet).
- Remote control of RTS, CTS, DTR, and DSR lines.
- "On-the-fly" commands for immediate serial port configuration.
- Serial-side "modem" commands for network connections control.
- Direct control of ADSL modems.
- Supports UDP, TCP, ARP, ICMP (ping), DHCP, PPPoE, LCP.



SPECIFICATION:

- 10/100BaseT, auto-MDIX Ethernet port.
- One RS232 serial port (TX, RX, RTS, CTS, DTR, DSR).
- Two status LEDs on the RJ45 jack.
- Two Ethernet status LEDs on top of the device.
- Power: 10-24V (12V nominal).
- Dimensions: 60x47x30mm.
- Firmware is up-gradeable through the serial port or network.

Axis Automatic Entrance Systems Ltd, Unit 6, Queens Park Industrial Estate, Studland Road, Northampton, NN2 6NA
Telephone: 0844 504 6525 · Fax: 0844 504 6526 · Email: sales@axisautomatic.com · Web: www.axisautomatic.com
Service: 0844 504 6535 · Fax: 0844 504 6536 · Sales: 0844 504 6545 · Fax: 0844 504 6546